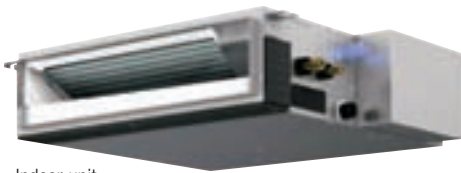


# Mr. SLIM™

## PEA(D)-SERIES Ceiling-Concealed

### COOLING ONLY

- Variable Compressor Speed Inverter Technology
- Ozone-Friendly R-410A Refrigerant
- Significant Energy Savings up to 30%
- Super-Quiet Technology Only 23dB(A)
- Extra-Low Static Pressure of Only 0.02 in.WG
- Easy Maintenance with Self-Diagnostic Feature
- 3 Fan Speed Settings to Deliver Precise Comfort
- Low Ambient Cooling at -18°C (0°F)
- Factory Installed Ultra-Low Ambient (-40°C/F) Option
- Built-in High-Performance Drain Pump
- Auto-Restart after Power Failure
- Extra-Long Pipe Length - up to 165 ft.
- Refrigerant Pre-Charged
- Ultra-Slim Body - less than 8" High
- Weekly Timer - up to 8 Patterns Each Day
- 2-Year Parts Warranty
- 7-Year Compressor Warranty



Indoor unit



Slim Smart Remote



Outdoor unit  
PUY-A12/18NHA3



Outdoor unit  
PUY-A24/30/36NHA3



Outdoor unit  
PUY-A42NHA3

Indoor Unit Model			PEA-A12AA	PEA-A18AA	PEAD-A24AA	PEAD-A30AA	PEAD-A36AA	PEAD-A42AA
Outdoor Unit Model			PUY-A12NHA3	PUY-A18NHA3	PUY-A24NHA3	PUY-A30NHA3	PUY-A36NHA3	PUY-A42NHA3
Capacity (Min ~ Max)	Cooling	Btu/h	6,000 ~ 12,000	8,000 ~ 18,000	12,000 ~ 24,000	12,000 ~ 30,000	12,000 ~ 35,000	18,000 ~ 42,000
Power Input	Cooling	W	1,240	2,150	2,400	3,850	4,850	5,350
SEER			13.8	14.3	16.0	15.5	15.0	13.8
EER			9.7	8.4	10.0	7.7	7.2	7.8
Capacity Control			Variable Compressor Speed					
Refrigerant			R-410A					
Power Supply	V, Phase, Hz		208-230, 1, 60					
Indoor	Dimension (W x D x H)	inch	39 x 27 7/8 x 7 7/8	46 7/8 x 27 7/8 x 7 7/8	43 3/8 x 28 7/8 x 9 7/8		55 1/2 x 28 7/8 x 9 7/8	
		mm	990 x 700 x 200	1190 x 700 x 200	1100 x 732 x 250		1400 x 732 x 250	
	Weight	lbs (kg)	48 (21)	60 (27)	73 (33)	73 (33)	91 (41)	95 (43)
	Airflow (Lo-Med-Hi)	CFM Dry	247-317-388	423-529-635	512-636-742	618-742-883	847-1024-1201	1042-1254-1483
	Ext. Static Pressure	in. WG	0.02/0.06/0.14/0.20	0.02/0.06/0.14/0.20	0.14/0.20/0.28/0.40/0.60		0.14/0.20/0.28/0.40/0.60	
		Pa	5/15/35/50	5/15/35/50	35/50/70/100/150		35/50/70/100/150	
	Moisture Removal	Pint/h	2.47	3.26	6.9	8.6	7.9	9.0
	Sound (Lo-Med-Hi)	dB(A)	23-28-33	30-34-38	30-33-37	30-34-39	33-38-42	36-40-44
	Max. Fuse	A	15	15	15	15	15	15
	Min. Ampacity	A	1	2	2.63	2.73	3.30	3.50
	Field Drain Pipe Size	O.D. in. (mm)	1-1/4 (32)	1-1/4 (32)	1-1/4 (32)	1-1/4 (32)	1 1/2 (32)	1 1/2 (32)
Outdoor	Dimension (W x D x H)	inch	31 1/2 x 13 x 23 3/8			37 3/8 x 13 x 37 3/8		37 3/8 x 13 x 53 1/8
		mm	800 x 330 x 600			950 x 330 x 943		950 x 330 x 1350
	Weight	lbs (kg)	90 (41)	97 (44)	165 (75)	165 (75)	165 (75)	260 (118)
	Sound	dB(A)	46	46	48	48	48	51
	Max. Fuse	A	15	20	30	40	40	40
	Min. Ampacity	A	13	13	18	25	25	26
Pipe Size	Liq. x Gas in. (mm)		3/4 x 1/2 (6.35 x 12.7)			3/4 x 3/4 (9.52 x 15.88)		
Max. Height Difference	Ft. (m)		100 (30)	100 (30)	100 (30)	100 (30)	100 (30)	100 (30)
Max. Pipe Length	Ft. (m)		100 (30)	100 (30)	165 (50)	165 (50)	165 (50)	165 (50)